

COUNCIL

TUESDAY, 20TH NOVEMBER 2018, 6.30 PM
COUNCIL CHAMBER, TOWN HALL, CHORLEY

I am now able to enclose, for consideration at the above meeting of the Council, the following reports that were unavailable when the agenda was published.

Agenda No	Item	
5	CHORLEY COUNCIL CORPORATE STRATEGY	
	A ALTERNATIVE CORPORATE STRATEGY	(Pages 55 - 64)
	To consider a report of the Conservative Group.	
6	ELECTORAL REVIEW - WARDING ARRANGEMENTS: DRAFT RECOMMENDATIONS	(Pages 65 - 114)
	To receive and consider the report of the Director (Policy and Governance) enclosed.	
	If you would like to display individual streets please click on the following link to LGBCE website which contains a map that can be increased (by zooming in) https://consultation.lgbce.org.uk/node/13207 .	
9	TO CONSIDER THE NOTICES OF MOTION GIVEN IN ACCORDANCE WITH COUNCIL PROCEDURE RULE 10	(Pages 115 - 116)
	A second Notice of Motion has been submitted by Councillor Alan Whittaker.	

GARY HALL
CHIEF EXECUTIVE

Electronic agendas sent to Members of the Council

If you need this information in a different format, such as larger print or translation, please get in touch on 515151 or chorley.gov.uk

This page is intentionally left blank



Report of	Meeting	Date
Leader of the Conservative Group/Deputy Leader of the Conservative Group	Council	20 Nov 2018

CONSERVATIVE GROUP ALTERNATIVE CORPORATE STRATEGY 2018/19

PURPOSE OF REPORT

- To present the Conservative Group’s proposed Corporate Strategy.

RECOMMENDATION(S)

- That the strategy is noted in debating the development and approval of the Council Corporate Strategy for 2018/19 to 2020/21.

EXECUTIVE SUMMARY OF REPORT

- The report sets out the Conservative Group’s proposed Corporate Strategy. The strategy responds to the changing demographic of Chorley and sets out key principles and a plan to create a borough where people can start well, live well and age well.
- The strategy is guided by five key themes: health and wellbeing; retail, leisure and tourism; education; business; and housing. The themes are supported by 22 projects identified for delivery in year 1.

Confidential report Please bold as appropriate	Yes	No
--	-----	----

CORPORATE PRIORITIES

- This report relates to the following Strategic Objectives:

Involving residents in improving their local area and equality of access for all	✓	A strong local economy	✓
Clean, safe and healthy communities	✓	An ambitious council that does more to meet the needs of residents and the local area	✓

INTRODUCTION

6. Over recent years, the demographic of Chorley Borough has changed significantly, moving away from a traditional market town and becoming a commuter town with surrounding villages and a popular market. Our strategy is to ensure we build on how the town and villages have developed and how these will adapt to future changes to create a borough in which people can start well, live well and age well.
 - We intend to ensure that through our investments and projects we attract higher paid jobs to the borough and ensure that through continuing education linked to business need we offer people a better future within the borough. For those working outside the borough we will work to ensure access is improved.
 - We will attract new businesses to the town by identifying areas on which industrial and commercial units can be developed whilst protecting our greenbelt.
 - We will work to ensure a wider range of housing options are available including developing new social housing and that they are future proofed as far as practically possible.
 - We will seek to generate sustainable income streams with low risk investment but high returns.
7. Initial action towards delivering our strategy will include feasibility and assessment work to inform the sustainable development of the strategy in future years including but not limited to; a land usage assessment; feasibility study to consider widening the attraction of the borough to future proof the town and our villages; and a needs analysis of educational requirements throughout the entire Borough.
8. The strategy is guided by five key themes and 22 projects to support delivery in year one. The themes, projects and descriptions are set out below:

THEMES

Health and Wellbeing	Making Chorley Borough a place where people ‘start well, live well and age well’
Retail, Leisure and Tourism	Making Chorley Borough a better place to visit, shop
Education	Making Chorley Borough a better place to educate and be educated
Business	Making Chorley Borough a better place to do business
Housing	Making Chorley Borough a better place to live

THEMES	Health and Wellbeing	Retail, Leisure and Tourism	Education	Business	Housing
KEY PROJECTS	Create an additional Digital Inclusion Officer Post targetted at our Rural and Parish areas	Establish a Visitor & Tourism Manager post	Undertake a needs analysis of educational requirements in Chorley Borough	Undertake a borough-wide land usage assessment	Develop an action plan and programme of work to establish Lifetime Homes Standards in Chorley
	Establish a community connectivity and inclusion fund	Establish and deliver an independent retail grants scheme focusing on local and artisan retailers throughout the Borough	Partner with local business and education providers to develop a further education offer based in Chorley	Appoint an Inward Investment Business Growth Officer	Establish a strategic housing delivery board with local stakeholders, housing providers and developers
	Develop targetted wellbeing schemes for all genrations from child through to older adult	Deliver a programme of sustainable improvements to the Chorley Markets		Develop and deliver a Chorley apprenticeship scheme, in partnership with established further education providers and employers	Review options to accelerate alternative housing delivery across the borough with a focus on the development of new build social housing
	Establish a Community Partnerships Unit with a Community Projects Leader	Improve the look and feel of the town centre streetscene			Undertake initial feasibility work to improve borough wide connectivity
	Establish a strategy and fund to revitalise and re-engage young people with outdoor recreation and activities	<p>Improve the borough-wide leisure offer for young people by creating an Outreach from our Youth Zone</p> <p>Carry out a feasibility study for developing a Borough wide accessible sports village</p>		Undertake a survey to identify which type of buisness operate within the Borough and where they are	Develop a student accomodation offer in and around the town centre, in partnership with local universities

Project descriptions

Project	Description	Timescale
Health and Wellbeing		
Create an additional Digital Inclusion Officer post targeted at our Rural and Parish areas	An additional Digital Inclusion Officer post will be created to focus on working in rural and parish areas. In addition the scope of the digital inclusion work will also be broadened to include convenience and lifestyle technology such as contactless payment and smart media and investigate opportunities for incorporating this technology into council services where possible.	Year 1
Establish a community connectivity and inclusion fund	Establish a social inclusion grant fund to be administered by the Health and Wellbeing team in response to applications from sheltered housing providers, organisations or local groups delivering targeted work to address social isolation across the borough	Year 1
Develop targeted wellbeing schemes for all generations from children through to older adults	<p>Develop schemes to improve the health and wellbeing of key target groups using existing community and council assets to build skills and strengthen personal resilience.</p> <p>Following an options appraisal to establish available assets, land and funding, the project will first look to develop an initiative that builds on the concept of community gardens and 'Men in Sheds' by using practical skills to increase social interaction, informal learning and environmental contribution.</p>	Year 1 of 2 year project
Establish a Community Partnerships Unit with a Community Projects Leader	The Community Projects Leader would head up a new Community Partnership Unit within the Health and Wellbeing team to improve project delivery and support community working. This role would coordinate neighbourhood and community priorities and project delivery across both the council and with local stakeholder groups such as parish council's and the third sector to ensure the best use of available resources and sources of funding.	Year 1

<p>Establish a strategy and fund to revitalise and re-engage young people with outdoor recreation and activities</p>	<p>This project will see a prioritisation of improvements to open space and outdoor recreational areas in our town, parishes and rural areas through the creation of a new fund specifically to support the wider outdoor activities over and above that of the traditional play area.</p>	<p>Year 1</p>
<p>Retail, Leisure and Tourism</p>		
<p>Establish a Visitor and Tourism Manager post</p>	<p>A specific tourism development post will be established to review the current approach to marketing and tourism and to identify how we can better promote Chorley Borough to new visitors. Activity will focus on highlighting the Boroughs existing assets and cultural heritage to develop a bespoke and distinct tourist offer with a focussed approach to actively encourage visitors to our rural and parish areas. This could include a heritage trail, local history exhibitions, designated walking, hiking and cycling routes and improved connectivity between local points of interest to boost both town and rural economies.</p>	<p>Year 1</p>
<p>Establish and deliver an independent retail grants scheme focusing on local producers and artisan retailers throughout the Borough</p>	<p>Establish and promote the Chorley ‘Independent Retail Fund’ to support activity to attract a wider range of unique shops both into Chorley Town Centre as part of a more diverse and vibrant offer and also to rural and parish areas.</p> <p>This investment will provide a targeted grant scheme to incentivise new independent businesses to set up throughout the Borough or to grow existing independent businesses, and also encourage the creation of local independent/artisan trader networks.</p>	<p>Year 1 of 2 year programme</p>
<p>Deliver a programme of sustainable improvements to the Chorley Markets</p>	<p>Deliver improvements to the existing Chorley Markets to make the most of Chorley’s strong market tradition and heritage as part of developing a more unique and vibrant retail and leisure experience.</p> <p>A programme of improvements will trial the introduction of new and alternative market features and formats including increasing the number of outdoor market days, summer evening markets, artisan markets and food court style layout. Further improvements would consider physical enhancements to the market setting including a semi-permanent purpose built outdoor space.</p> <p>Improvements will maximise the market contribution to both the daytime and</p>	<p>Year 1 of 2 year project</p>

	evening economy, encouraging people to stay longer and spend more in Chorley town centre.	
Improve the look and feel of the town centre streetscene	<p>This project will generate a full, up to date Town Centre Masterplan, following open consultation with key stakeholders, local businesses, traders, residents and visitors.</p> <p>It would then look to undertake an extensive redevelopment of the town centre street scene, together with other investment projects will re-establish Chorley as a unique retail destination. The development will build on the town's heritage to re-profile the retail and leisure offers including significant physical changes to key shopping streets.</p>	Year 1 of 5 year programme
Improve the borough wide leisure offer for young people by creating an outreach from the Youth Zone	Working with the Youth Zone, young people across the borough and existing Council services, this project would create an outreach services for young people in rural areas of the borough. The aim being to provide events and activities for them in their local areas as well as through the Youth Zone facility in the town centre.	Year 1 of 2 year project
Carry out a feasibility study for developing a Borough wide accessible sports village	A lot has changed since previous reviews into sports villages were carried out. This project will review and refresh previous studies into developing a sports village in the Borough, accessible for all in the Borough. Consideration will be given to facilities such as a stadium, athletics track, sports hall, all weather training facilities, health/education facilities and FA and RFU standard pitches. This should include identification of potential sites, demand/needs assessment, engagement with local sports clubs, schools and other potential users and usage models and full financial appraisal.	Year 1
Education		
Undertake a needs analysis of educational requirements in Chorley Borough	To further investigate Chorley's local need following the 2018 report issued by the Education and Skills Funding Agency which predicts that an extra 79,000 primary places will be needed across England in the next three years, and an additional 87,000 places needed in secondary schools. This project would be to commission / undertake a piece of work to understand education need and projected demand (school places, further education provision and skills provision) within Chorley. This work would then be used as an evidence base to be presented back to Lancashire County Council to be used in their consideration and planning of school places	Year 1

	<p>across the borough. Taking into account the special needs of our villages and rural areas.</p> <p>The assessment would also consider alternative models of school place provision.</p>	
Partner with local business and education providers to develop a further education offer based in Chorley	This project aims to establish further education provision in Chorley for our young people, so they do not have to travel outside of the borough for education after GCSE. In year 1 this will involve partnering with local business and education providers to develop a proposed operating model and business case, together with identifying potential sites.	Year 1
Business		
Undertake a borough wide land usage assessment	<p>Commission an assessment of land usage across the borough in order to properly define land and increase that available for commercial usage.</p> <p>This work will form part of the partial review of the core strategy linked to the economic land review and will identify land suitable for commercial usage, linking to the development of industrial/commercial centres across the borough.</p>	Year 1
Appoint an Inward Investment Business Growth Officer and deliver an enhanced grants scheme	<p>Appoint an Inward Investment Business Growth Officer with the expertise to lead the delivery of activity to increase investment in Chorley Borough linked to regional and national economic growth schemes such as the Northern Powerhouse agenda and City Deal programme.</p> <p>The Inward Investment Officer will work collaboratively with regional and national stakeholders (including central government departments) to raise the profile of Chorley, develop networks and secure inward investment, and new businesses.</p> <p>Activity will be supplemented by a review and refresh of the business support grants function to attract key inward investment targets.</p>	Year 1
Develop and deliver a Chorley Apprenticeship Scheme, in partnership with established further education providers and employers	<p>Following the government's announcement to extend the amount of the apprenticeship levy that employers can use in their supply chains from 10% to 25%, we would work with local SMEs in large supply chains to bring more of that funding and opportunity into Chorley.</p> <p>This initiative would challenge local businesses to pledge a target number of new apprenticeship places over the next two years.</p>	Year 1 of 2 year initiative

	<p>This project will establish a scheme to work alongside the Apprenticeship Levy Fund for SME's and provide grants to supplement employers' allowance of £15,000 per apprentice to encourage local take up of the scheme.</p> <p>The grants will incentivise local organisations with 'top up' funding to support apprenticeships within their business and ensure that any barriers to take up for organisations are removed.</p> <p>Increased take up of apprenticeships will support better opportunities for young people, a broader range of options on leaving school or college and help companies thrive in Chorley.</p>	
Development of a new strategic commercial site	<p>The aim of this project is to develop a new commercial and industrial development within the borough and for the Council to actively encourage new business into the area that will complement the existing ones.</p> <p>In year one this project will be progressed through undertaking a survey to identify which type of businesses operate within the Borough and where they are located which will influence the location of the new site.</p>	Year 1
Housing		
Develop an action plan and programme of work to establish Lifetime Homes Standards in Chorley	<p>Lifetime Homes Standards apply 16 key design principles to create adaptable, flexible housing stock to increase the variety of housing available and support people to live independently for longer.</p> <p>This project will form a task group with local developers and housing providers to define an action plan for applying Lifetime Homes Standards in Chorley over the next 5-10 years.</p>	Year 1
Establish a strategic housing delivery board with local stakeholders, housing providers and developers	<p>This project will establish a strategic partnership with key local stakeholders, housing providers and developers to agree actions to deliver priorities for housing development in Chorley. This will enable the Council to shape and influence local policy and development through a partnership approach.</p>	Year 1
Review options to accelerate alternative housing delivery	<p>Alongside work to review housing and planning policy, this project will look at ways to accelerate housing delivery and take more control of the local market.</p>	Year 1

<p>across the borough with a focus on the development of new build social housing</p>	<p>It will explore options for new models of housing development including the potential for the Council to build its own social housing to Lifetime Homes Standard and use of alternative build methods, such as modular housing. The first phase of the project would undertake a feasibility assessment and options appraisal.</p> <p>The second phase would develop an action plan and implement activity to progress viable options</p>	
<p>Undertake initial feasibility work to improve borough wide connectivity</p>	<p>This work will review connectivity of the borough and its wider functional economic area both in terms of residents and also with a view to future economic growth aspirations.</p> <p>Action in year one will consider rail connectivity including the provision of sufficient parking at the borough's main railway stations to support those who commute to work. This will include resident consultation and engagement with key stakeholders including Network Rail, Transport for Greater Manchester, relevant train operating companies and land owners.</p>	<p>Year 1</p>
<p>In partnership with local universities, develop a student accomodation offer in and around the town centre</p>	<p>Student accommodation is in high demand all over the country, and many universities are now looking beyond their immediate area for student housing provision. Many private companies have entered the market and provide student accommodation at a high standard and a high price. Chorley's excellent transport links to the main cities around the North West mean that the town centre could be a viable location for students attending universities anywhere between Lancaster and Manchester. This project would investigate potential town centre sites, undertake a financial feasibility assessment and work with a range of universities and high education providers to understand the level of needs and requirements. If successful this project could create new jobs, support the town centre retail and evening economy and vibrancy as well as being a guaranteed income stream for the Council.</p>	<p>Year 1</p>

IMPLICATIONS OF REPORT

9. This report has implications in the following areas and the relevant Directors' comments are included:

Finance	✓	Customer Services	
Human Resources		Equality and Diversity	
Legal		Integrated Impact Assessment required?	
No significant implications in this area		Policy and Communications	

COMMENTS OF THE STATUTORY FINANCE OFFICER

10. The proposals outlined in this paper will be brought into the Alternative Budget to be proposed to Full Council on 26 February 2019.

COMMENTS OF THE MONITORING OFFICER

11. No comment.

CLLR ALAN CULLENS
LEADER OF THE CONSERVATIVE GROUP

CLLR MARTIN BOARDMAN
DEPUTY LEADER OF THE CONSERVATIVE GROUP

There are no background papers to this report.



Report of	Meeting	Date
Director of Policy and Governance	Electoral Review of Chorley Council Committee	6 November 2018

DRAFT RECOMMENDATIONS ON WARDING ARRANGEMENTS

PURPOSE OF REPORT

- To present the LGBCE's draft recommendations on new warding arrangements for Chorley Council and for members of the committee to discuss and formulate a response.

RECOMMENDATION(S)

- To formulate a formal response to the LGBCE's draft recommendations; to be presented at the council meeting on 22 January 2019 prior to submitting it to the LGBCE.

EXECUTIVE SUMMARY OF REPORT

- The LGBCE has published its draft recommendations into new warding arrangements for Chorley Council as part of the electoral review (appendix A). This report provides a summary of the draft recommendations and highlights any variation with Chorley Council's submission on preferred ward boundaries.

Confidential report Please bold as appropriate	Yes	No
--	-----	----

CORPORATE PRIORITIES

- This report relates to the following Strategic Objectives:

Involving residents in improving their local area and equality of access for all		A strong local economy	
Clean, safe and healthy homes and communities		An ambitious council that does more to meet the needs of residents and the local area	X

BACKGROUND

- Chorley Council was informed in June 2017 that the LGBCE would be conducting an electoral review intervention as part of its 2018/19 work programme. The aim of the review is to improve electoral equality across the borough. The electoral review is split into two stages:-
 - Stage 1 – Decision on the Council Size
 - Stage 2 – New ward patterning arrangements
- On 26 June 2018, the LGBCE announced that it was minded to agree to the council's proposal on its preferred council size (the submission for which was approved by majority decision at the council meeting on 10 April 2018) in that:
 - Chorley should be represented by 42 councillors, five fewer than at present;

- Chorley should consist of 14 wards, six fewer than at present;
This decision brought stage one of the review to a close.

7. Stage 2 of the review consists of two separate public consultations. In its first consultation which ran from 26 June 2018 until 3 September 2018; the LGBCE sought suggestions on which neighbouring areas of the borough should be put together to form each ward. Chorley Council's proposal was accepted as a late submission (following LGBCE's prior approval) which was agreed by majority decision at its meeting on 18 September 2018.

LGBCE'S DRAFT RECOMMENDATIONS

8. On 6 November 2018 the LGBCE published its draft recommendations on new warding arrangements for Chorley. On the same day they also launched their second public consultation based on those draft recommendations. The consultation is open until 14 January 2019.
9. When comparing the LGBCE's draft recommendations against those proposed by Chorley Council, the findings are as follows:

10. **Adlington and Anderton Ward**

The LGBCE's proposal remains unchanged from the proposal of the council.

11. **Clayton East, Brindle and Hoghton (*this ward was named Brindle and Hoghton in the council's proposal*)**

The LGBCE did not consider that the council's proposal satisfied its statutory criteria. It therefore developed its own proposal based on a local resident's submission. By using the A6 road as a ward boundary from the south of the parish up to the B5256 it was able to create a Clayton East, Brindle and Hoghton Ward and a Clayton West and Cuerden ward which follow relatively clear boundaries and provide for reasonably good electoral equality.

Reason: It will ensure that communities in the east of Clayton-le-Woods parish will have clear road links with the parishes of Brindle and Hoghton via Sandy Lane and Westwood Road.

12. **Buckshaw and Whittle**

The LGBCE's proposal remains unchanged from the proposal of the council.

13. **Chorley East**

Although largely based on the council proposal, the LGBCE has changed the boundary in the north of the ward. The proposal is to run the ward boundary along the railway line and Corporation Street, instead of following the polling district boundary as proposed by the council which ran across Stump Lane and to the rear of Kershaw Street, Cobden Street and Foster Street.

Reason: The proposed ward broadly follows the existing Chorley East ward. It will also incorporate the rural areas of Heath Charnock and Anglezarke both of which have good road access to the urban part of the ward.

14. Chorley North

The LGBCE has adopted the council's proposal in regards to including Astley Village in this ward. However, it has significantly amended the remainder of the ward in that it has followed the Astley Village and Euxton parish boundary to remove a 'bottle neck' between north-west and south-east Euxton. It has also transferred Whittle-le-Woods East parish ward to the Chorley North East ward.

Reason: The LGBCE did not consider that the council's proposed Chorley North ward followed sufficiently clear boundaries and contained relatively disparate areas with little sense of shared community identity.

15. Chorley North East

The LGBCE's proposal is based on the council's submission apart from a significant amendment of the boundary in the west of the ward. The decision to place the existing East parish ward of Whittle-le-Woods in this borough ward was to create a more cohesive warding pattern in this part of the borough.

Reason: It is considered that this ward patterning better reflects road access routes in the area, where Whittle-le-Woods parish has strong links all the way up to Withnell parish via the A674 and B6229.

16. Chorley North West

The LGBCE's proposal is broadly based on the council's submission for this ward which is similar to the existing ward in this area. It agrees that the council's proposal to incorporate the 09E polling district in this ward using Tootell Street as a strong, recognisable boundary. However, some modifications to this ward have been made to create more identifiable boundaries which follows the railway line (rather than Market Street) in the east of the ward. The recommendation also follows Pall Mall in its entirety.

Reason: That the proposed boundaries are more identifiable than those proposed by the council for this ward. This arrangement will also have a good electoral equality in 2024.

17. Chorley South East

This ward has broadly been based on the council's proposals. However, the LGBCE has made a minor change to the northern boundary where it proposes to follow Pall Mall.

Reason: Pall Mall is considered a strong boundary. This arrangement would also have good electoral equality in 2024 which reflects community identities.

18. Chorley South West

The LGBCE has based its recommendations for this ward on that of the council's subject to minor boundary changes to the east of the ward. Its proposal includes electors on the western side of Tootell Street, Weldbank Lane and Mountbatten Road and its connected roads.

Reason: it is considered that the LGBCE's draft recommendation follows more identifiable boundaries and will ensure good electoral equality.

19. **Clayton West and Cuerden (*this ward was named Clayton North in the council's proposal*)**

As with the ward of Clayton East, Brindle and Hoghton, the LGBCE did not consider that the council proposal satisfied its statutory criteria. It therefore developed its own proposal based on a local resident's submission. By using the A6 road as a ward boundary from the south of the parish up to the B5256 it was able to create a Clayton East, Brindle and Hoghton Ward and a Clayton West and Cuerden ward which follow relatively clear boundaries and provide for reasonably good electoral quality.

Reason: It will ensure that communities in the east of Clayton-le-Woods parish will have clear road links with the parishes of Brindle and Hoghton via Sandy Lane and Westwood Road.

20. **Coppull**

The LGBCE has based its draft recommendation on the council's.

21. **Eccleston, Charnock Richard and South Euxton (*this ward was named Eccleston, Heskin and Charnock in the council's proposal*)**

Chorley Council's proposal for this ward was rejected in favour of an alternative submission (Chorley Conservative Association) which placed the south of Euxton parish in a ward with the parishes of Eccleston and Charnock Richard.

The LGBCE also decided to include Firbak, Brookside and Park Avenue in this ward as it best reflects the local road layout and access routes.

Reason: The submission better reflected local transport routes between communities and overall, provide for more clearly identifiable ward boundaries. The change of name is descriptive of the communities which comprise it.

22. **Euxton**

The council's submission is similar to that of the Chorley Conservative Association's submission in which they both place the current Euxton North ward and the eastern part of the current Euxton South ward together. This proposal has been agreed by the LGBCE, with the exception of an amendment to the eastern boundary.

Reason: the eastern boundary has been amended to follow the parish boundary.

23. **Croston and Mawdesley (*this ward was named Lostock and Mawdesley in the council's proposal*)**

Chorley Council's proposal for this ward was rejected in favour of an alternative submission (Chorley Conservative Association) which placed Heskin with Bretherton, Croston, Mawdesley and Ulmes Walton.

Reason: The submission better reflected local transport routes between communities and overall, provide for more clearly identifiable ward boundaries. The ward name has changed from that proposed by the council, as it was considered Croston, being a village and having 40% of the wards electorate, was a more defining feature of the ward than the River Lostock.

Parish Electoral Arrangements

24. The LGBCE cannot make any recommendations to change parish external boundaries; this can only be achieved through the local authority conducting a Community Governance Review. However, Schedule 2 of the Local Democracy, Economic Development and Construction Act 2009 provides that (as a result of an electoral review) if a parish is to be divided between different borough wards it must also be divided into parish wards, so that each parish ward lies wholly within a single borough ward.
25. The draft recommendations for the new warding arrangements recorded above will result in the following changes to three parish councils: -

Parish Council	Parish Ward	No. of parish councillors	Total No. of parish councillors per parish ward
Clayton-le-Woods	Clayton Brook	5	15
	Clayton Green East	1	
	South East	2	
	West	7	
Euxton	Buckshaw Village	5	18
	North & East	11	
	South	2	
Heath Charnock	East	2	7
	West	5	

NEXT STEPS

26. The draft recommendations are currently out for public consultation, the deadline for which is 14 January 2019.
27. It would be expected that the council responds to the draft recommendations (including ward names). However, should the Committee be minded to suggest any amendments to the proposal, members are reminded that the LGBCE's draft recommendations do demonstrate elector equality in each ward for some years to come. Changing a boundary of a single ward would have a domino effect on the rest of the wards.
28. Due to the authority's timetable of meetings, the LGBCE has approved an extension for the council to submit its response by the 25 January 2019. This will allow sufficient time for the committee to consider the proposed response, and for it to be presented at the council meeting on 22 January 2019 for approval, subject to a draft response being submitted to the LGBCE before the consultation expires.
29. The LGBCE's final recommendations will be published on 26 March, two weeks later than previously timetabled. After which the proposed changes must be approved by Parliament. The draft Order will provide for new electoral arrangements to be implemented at the all-out elections for Chorley in 2020.

IMPLICATIONS OF REPORT

30. This report has implications in the following areas and the relevant Directors' comments are included:

Finance		Customer Services	
Human Resources		Equality and Diversity	
Legal	X	Integrated Impact Assessment required?	
No significant implications in this area		Policy and Communications	

31. Any changes to the proposed wards cannot be made in isolation. Changes made to any of the wards will have a subsequent effect on its neighbouring wards.

COMMENTS OF THE STATUTORY FINANCE OFFICER

32. No comment

COMMENTS OF THE MONITORING OFFICER

33. The report properly sets out the process followed to date and the next steps to be taken in relation to the consultation.

REBECCA HUDDLESTON
DIRECTOR OF POLICY & GOVERNANCE

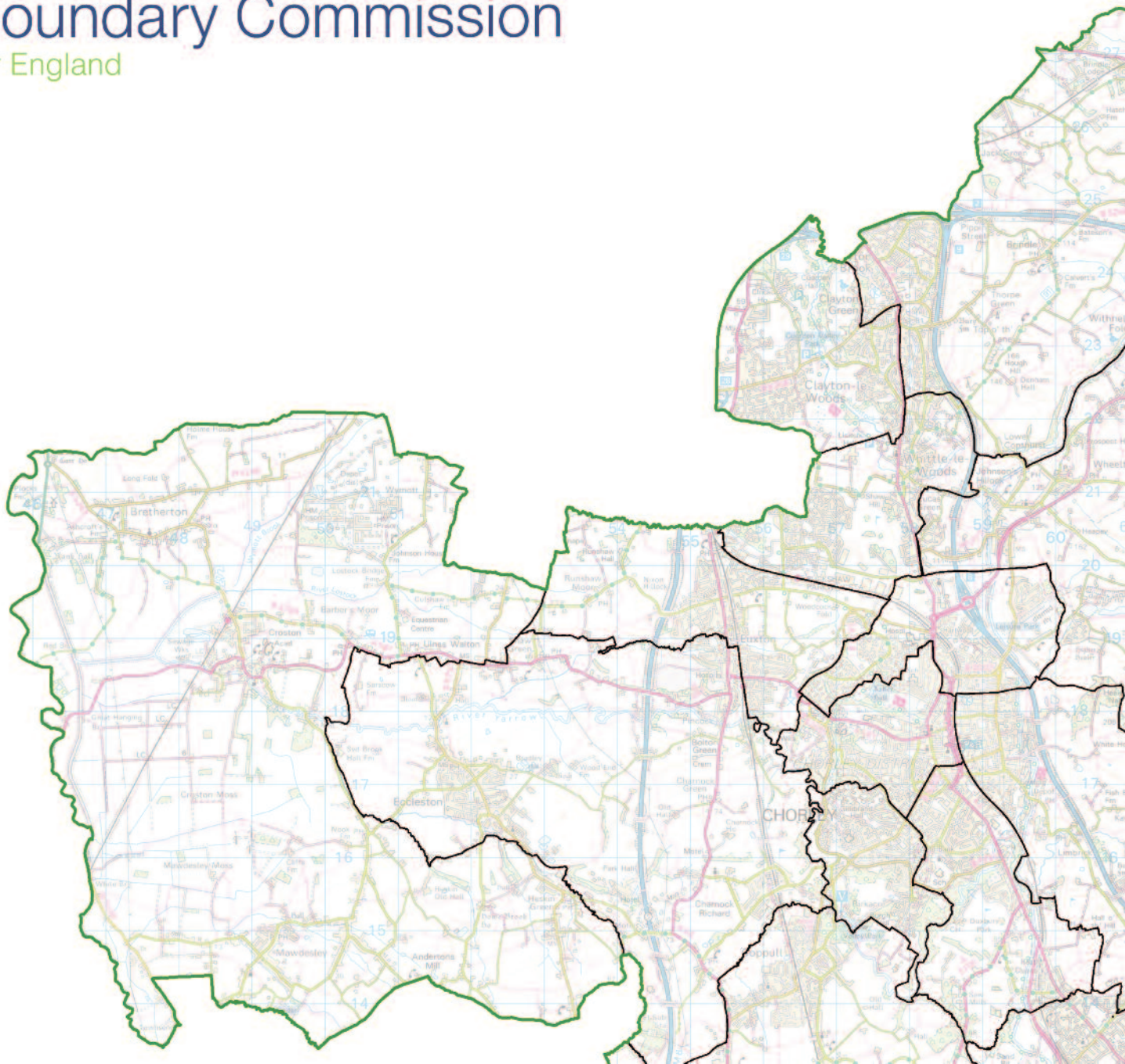
Background Papers			
Document	Date	File	Place of Inspection
Electoral Review	5 October 2017	https://democracy.chorley.gov.uk/documents/s79211/Electoral%20Review.pdf	Executive Cabinet agenda
Electoral Review Update	23 January 2018	https://democracy.chorley.gov.uk/documents/s82429/Report.pdf	Council agenda
The Electoral Review of Chorley Council Committee	27 February 2018	https://democracy.chorley.gov.uk/documents/s83882/Electoral%20Review%20Committee.pdf	Council agenda
Electoral Review of Chorley Council – Draft Council Size submission	10 April 2018	https://democracy.chorley.gov.uk/documents/s85271/Electoral%20Review%20of%20Chorley%20Council%20-%20Draft%20Council%20Size%20Submission.pdf	Council agenda
Draft minutes	15 August 2018	https://democracy.chorley.gov.uk/ieListDocuments.aspx?CategoryId=906&Mid=6896&Ver=4	Electoral Review of Chorley Council Committee meeting
Electoral Review – Ward Arrangements Proposal	18 September 2018	http://mod/documents/s89709/Electoral%20Review%20-%20Ward%20Arrangements%20Proposal.pdf	Council agenda

Have your say on draft recommendations for Chorley (map)	6 November 2018	https://consultation.lgbce.org.uk/node/13207	LGBC Website
--	-----------------	---	--------------

Report Author	Ext	Date	Doc ID
Phil Davies Cathryn Filbin	5131 5123	07/11/18	***

This page is intentionally left blank

The
Local Government
Boundary Commission
for England



New electoral arrangements for Chorley Council

Draft recommendations

November 2018

Translations and other formats

For information on obtaining this publication in another language or in a large-print or Braille version, please contact the Local Government Boundary Commission for England:

Tel: 0330 500 1525

Email: reviews@lgbce.org.uk

© The Local Government Boundary Commission for England 2018

The mapping in this report is based upon Ordnance Survey material with the permission of Ordnance Survey on behalf of the Keeper of Public Records © Crown copyright and database right. Unauthorised reproduction infringes Crown copyright and database right.

Licence Number: GD 100049926 2018

Table of Contents

Summary	1
Who we are and what we do	1
Electoral review	1
Why Chorley?	1
Our proposals for Chorley	1
Have your say	1
What is the Local Government Boundary Commission for England?	2
1 Introduction	3
What is an electoral review?	3
Consultation	3
How will the recommendations affect you?	4
2 Analysis and draft recommendations	5
Submissions received	5
Electorate figures	5
Number of councillors	6
Ward boundaries consultation	6
Draft recommendations	7
Northern Chorley	8
Eastern Chorley	12
Chorley town	16
Western Chorley	20
Conclusions	23
Summary of electoral arrangements	23
Parish electoral arrangements	23
3 Have your say	25
Equalities	26
Appendix A	27
Draft recommendations for Chorley Borough Council	27
Appendix B	29
Outline map	29
Appendix C	30
Submissions received	30
Appendix D	31
Glossary and abbreviations	31

Summary

Who we are and what we do

1 The Local Government Boundary Commission for England (LGBCE) is an independent body set up by Parliament. We are not part of government or any political party. We are accountable to Parliament through a committee of MPs chaired by the Speaker of the House of Commons.

2 Our main role is to carry out electoral reviews of local authorities throughout England.

Electoral review

3 An electoral review examines and proposes new electoral arrangements for a local authority. A local authority's electoral arrangements decide:

- How many councillors are needed
- How many wards or electoral divisions there should be, where their boundaries are and what should they be called
- How many councillors should represent each ward or division

Why Chorley?

4 We are conducting a review of Chorley Borough Council ('the Council') as the value of each vote in borough council elections varies depending on where you live in Chorley. Some councillors currently represent many more or fewer voters than others. This is 'electoral inequality'. Our aim is to create 'electoral equality', where votes are as equal as possible, ideally within 10% of being exactly equal.

Our proposals for Chorley

- Chorley should be represented by 42 councillors, five fewer than there are now.
- Chorley should have 14 wards, six fewer than there are now.
- The boundaries of all wards will change; none will stay the same.

Have your say

5 We are consulting on our draft recommendations for a 10-week period, from 6 November 2018 to 14 January 2019. We encourage everyone to use this opportunity to contribute to the design of the new wards – the more public views we hear, the more informed our decisions will be when analysing all the views we receive.

6 We ask everyone wishing to contribute ideas for the new wards to first read this report and look at the accompanying map before responding to us.

You have until 14 January 2019 to have your say on the draft recommendations. See page 25 for how to send us your response.

What is the Local Government Boundary Commission for England?

7 The Local Government Boundary Commission for England is an independent body set up by Parliament.¹

8 The members of the Commission are:

- Professor Colin Mellors OBE (Chair)
- Susan Johnson OBE
- Peter Maddison QPM
- Amanda Nobbs OBE
- Steve Robinson
- Andrew Scallan CBE

- Chief Executive: Jolyon Jackson CBE

¹ Under the Local Democracy, Economic Development and Construction Act 2009.

1 Introduction

9 This electoral review is being carried out to ensure that:

- The wards in Chorley are in the best possible places to help the Council carry out its responsibilities effectively.
- The number of voters represented by each councillor is approximately the same across the borough.

What is an electoral review?

10 Our three main considerations are to:

- Improve electoral equality by equalising the number of electors each councillor represents
- Reflect community identity
- Provide for effective and convenient local government

11 Our task is to strike the best balance between them when making our recommendations. Our powers, as well as the guidance we have provided for electoral reviews and further information on the review process, can be found on our website at www.lgbce.org.uk

Consultation

12 We wrote to the Council to ask its views on the appropriate number of councillors for Chorley. We then held a period of consultation on warding patterns for the borough. The submissions received during consultation have informed our draft recommendations.

13 This review is being conducted as follows:

Stage starts	Description
19 June 2018	Number of councillors decided
26 June 2018	Start of consultation seeking views on new wards
3 September 2018	End of consultation; we begin analysing submissions and forming draft recommendations
6 November 2018	Publication of draft recommendations, start of second consultation
14 January 2019	End of consultation; we begin analysing submissions and forming final recommendations
26 March 2019	Publication of final recommendations

How will the recommendations affect you?

14 The recommendations will determine how many councillors will serve on the Council. They will also decide which ward you vote in, which other communities are in that ward and, in some cases, which parish council ward you vote in. Your ward name may also change.

2 Analysis and draft recommendations

15 Legislation² states that our recommendations should not be based only on how many electors³ there are now, but also on how many there are likely to be in the five years after the publication of our final recommendations. We must also try to recommend strong, clearly identifiable boundaries for our wards.

16 In reality, we are unlikely to be able to create wards with exactly the same number of electors in each; we have to be flexible. However, we try to keep the number of electors represented by each councillor as close to the average for the council as possible.

17 We work out the average number of electors per councillor for each individual local authority by dividing the electorate by the number of councillors, as shown in the table below.

	2018	2024
Electorate of Chorley	85,575	90,148
Number of councillors	42	42
Average number of electors per councillor	2,038	2,146

18 When the number of electors per councillor in a ward is within 10% of the average for the authority, we refer to the ward as having 'good electoral equality'. All of our proposed wards for Chorley will have good electoral equality by 2024.

19 Our recommendations cannot affect the external boundaries of the borough or result in changes to postcodes. They do not take into account parliamentary constituency boundaries. The recommendations will not have an effect on local taxes, house prices, or car and house insurance premiums and we are not able to take into account any representations which are based on these issues.

Submissions received

20 See Appendix C for details of the submissions received. All submissions may be viewed at our offices by appointment, or on our website at www.lgbce.org.uk

Electorate figures

21 The Council submitted electorate forecasts for 2024, a period five years on from the scheduled publication of our final recommendations in 2019. These forecasts were broken down to polling district level and predicted an increase in the electorate of around 5% by 2024.

² Schedule 2 to the Local Democracy, Economic Development and Construction Act 2009.

³ Electors refers to the number of people registered to vote, not the whole adult population.

22 We considered the information provided by the Council and are satisfied that the projected figures are the best available at the present time. We have used these figures to produce our draft recommendations.

Number of councillors

23 Chorley Borough Council currently has 47 councillors. We have looked at evidence provided by the Council and have concluded that decreasing the number of councillors by five to 42 will ensure the Council can carry out its roles and responsibilities effectively.

24 We therefore invited proposals for new patterns of wards that would be represented by 42 councillors. As Chorley Borough Council elects by thirds (meaning it has elections in three out of every four years) there is a presumption in legislation⁴ that the Council will have a uniform pattern of three-councillor wards. We will only move away from this pattern of wards should we receive compelling evidence during consultation that applying such a pattern in a particular area of the authority would be inconsistent with satisfying the statutory criteria.

25 We received four submissions about the number of councillors in response to our consultation on warding arrangements. One respondent agreed with the 42-councillor scheme, while the other submissions either argued for a further reduction or increase. However, these submissions lacked detailed evidence as to why we should move away from the proposed number of 42 and how the authority would operate under an alternative council size. We have therefore based our draft recommendations on a 42-member council.

Ward boundaries consultation

26 We received 45 submissions in response to our consultation on ward boundaries. These included two borough-wide proposals from the Council and the Chorley Conservative Association. Both these schemes were based on a uniform pattern of three-councillor wards for 42 elected members.

27 Our draft recommendations are broadly based on the borough-wide proposals made by the Council. However, in some areas of the borough, we have also been persuaded by the Chorley Conservative Association's scheme and other more localised submissions, which provided evidence of community links and locally recognised boundaries. In some areas, we considered that the proposals did not provide for the best balance between our statutory criteria, so we identified alternative boundaries. We also visited Chorley to look at the various proposals on the ground. This helped us to decide between the different boundaries proposed.

⁴ Schedule 2 to the Local Democracy, Economic Development & Construction Act 2009 paragraph 2(3)(d) and paragraph 2(5)(c).

28 Our draft recommendations are for 14 three-councillor wards. We consider that our draft recommendations will provide for good electoral equality while reflecting community identities and interests where we have received such evidence during consultation.

29 A summary of our proposed new wards is set out in the table on pages 27–8 and on the large map accompanying this report.

30 We welcome all comments on these draft recommendations, particularly on the location of the ward boundaries, and the names of our proposed wards.

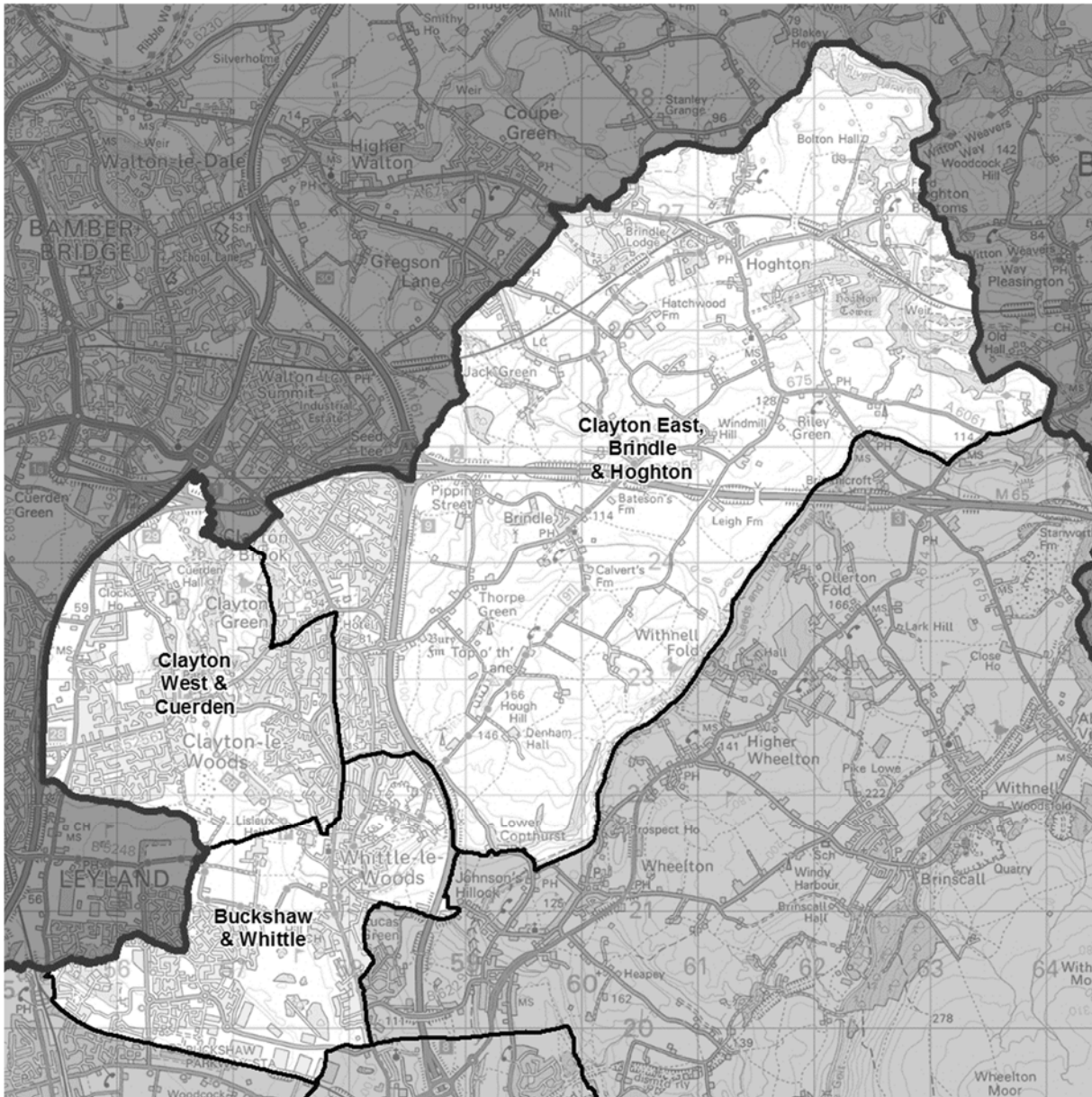
Draft recommendations

31 The tables and maps on pages 8–22 detail our draft recommendations for each area of the Chorley. They detail how the proposed warding arrangements reflect the three statutory⁵ criteria of:

- Equality of representation
- Reflecting community interests and identities
- Providing for effective and convenient local government

⁵ Local Democracy, Economic Development and Construction Act 2009.

Northern Chorley



Ward name	Number of Cllrs	Variance 2024
Buckshaw & Whittle	3	10%
Clayton East, Brindle & Hoghton	3	10%
Clayton West & Cuerden	3	7%

Buckshaw & Whittle

32 The Council and the Conservative Association proposed significantly different wards for the Buckshaw village and Whittle-le-Woods areas. The Council proposed a Buckshaw & Whittle ward containing the whole of Buckshaw village and the western part of Whittle-le-Woods parish. It proposed that the ward boundary follow the existing county division and parish ward boundaries in the east of the ward. The Conservative Association proposed that Buckshaw village be placed in a Buckshaw ward with Astley Village parish. It also proposed placing part of Whittle-le-Woods parish in a ward with part of Clayton-le-Woods parish, which is broadly similar to the current warding arrangements.

33 In addition to the borough-wide schemes, we received several submissions that related directly to the village of Buckshaw, a relatively new residential development that overlaps the borough boundary and is currently split between two wards. These submissions provided strong evidence that Buckshaw village should ideally be wholly contained in a single ward given its strong community identity. In addition, Astley Village Parish Council and a local resident argued against any proposal to keep Astley Village parish in a ward with Buckshaw village, emphasising the significant differences between the two areas.

34 Having carefully considered the evidence received, we have decided to place all of Buckshaw village in a single ward and place Astley Village in our proposed Chorley North ward (which is described in more detail later in this report).

35 However, while we note Buckshaw village's distinct community identity, there will not be enough electors by 2024 for it to have its own three-councillor ward with good electoral equality. In consideration of this, we visited Chorley to see whether placing the village with part of Whittle-le-Woods parish, as proposed by the Council, would produce a cohesive ward. It appeared to us that Buckshaw village has good links with the Whittle-le-Woods area. In particular, we noted that Dawson Lane and Buckshaw Avenue represent good road links between the two areas. In light of this, we have decided to base our draft recommendations on the Council's proposed Buckshaw & Whittle ward, which will have an electoral variance of 10% by 2024.

36 A small number of submissions also suggested that Buckshaw village should be wholly contained in one local authority. However, changing the external boundaries between Chorley and South Ribble boroughs falls outside the scope of the electoral review.

Clayton East, Brindle & Hoghton and Clayton West & Cuerden

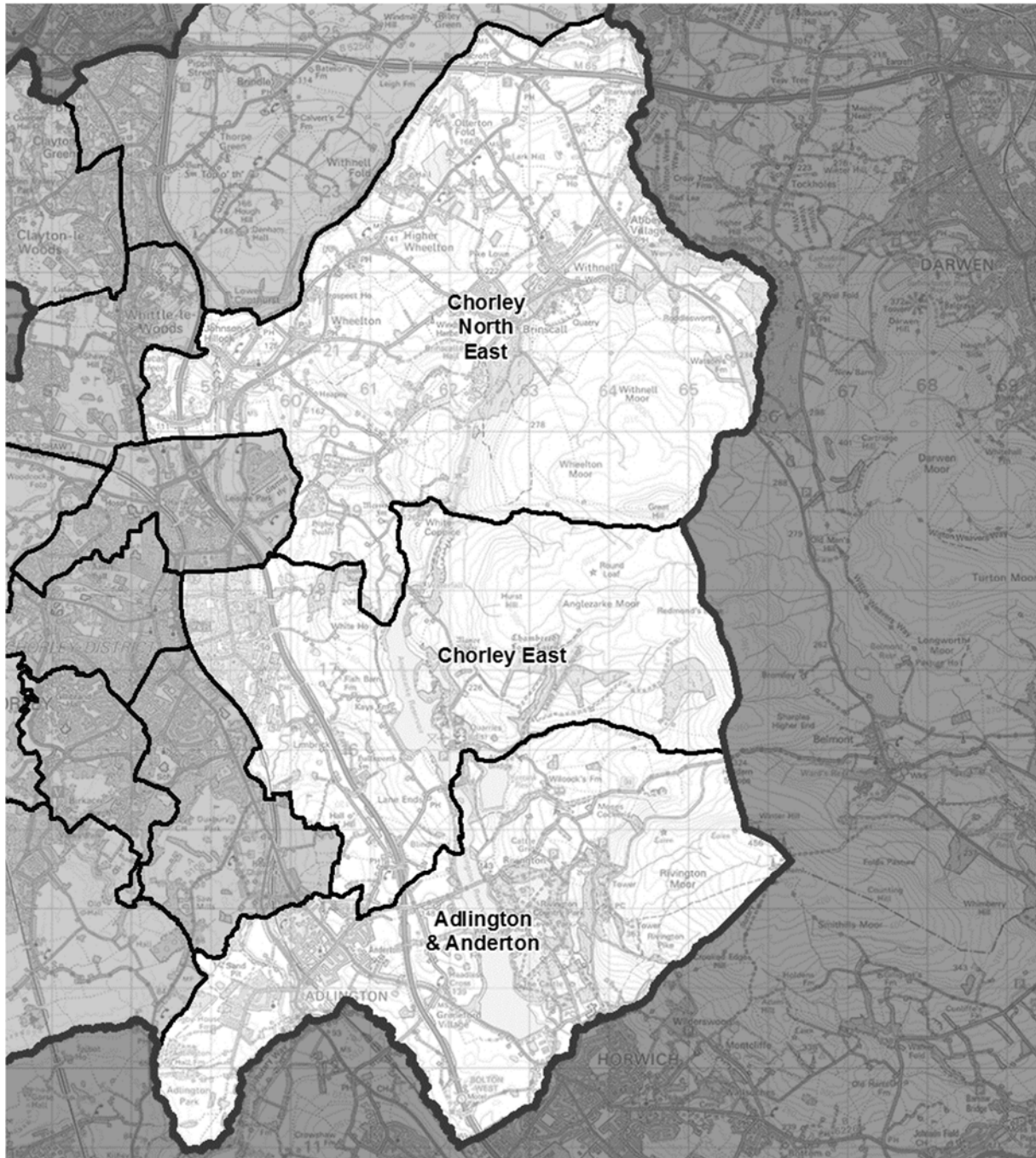
37 The two borough-wide schemes proposed significantly different warding arrangements for the northern parishes of Clayton-le-Woods, Cuerden, Brindle and Hoghton. We examined both in detail and concluded that neither adequately satisfied our statutory criteria. For example, both the Council's and the Conservative Association's proposals for Clayton-le-Woods and Cuerden parishes provided wards with insufficiently clear road links. In particular, we noted that electors in Clayton Brook would have to travel outside of the borough or via a neighbouring ward to reach the rural parishes of Brindle and Hoghton. The Council's proposal also divided the Clayton Brook community between wards by separating electors on Carr Meadow and Croft Meadow from the rest of the Council's proposed Clayton North

ward. Furthermore, the Conservative Association's proposed Clayton ward appeared to cut through the Clayton Green community.

38 We therefore developed an alternative proposal for the northern parishes that we considered would better reflect our statutory criteria. Our proposal is based on a local resident's submission, who stated that the A6 road could represent a strong boundary through Clayton-le-Woods parish. By using the A6 as a ward boundary from the south of the parish up to the B5256, we are able to create a Clayton East, Brindle & Hoghton ward and a Clayton West & Cuerden ward which follow relatively clear boundaries and provide for reasonably good electoral equality.

39 We consider our recommendations will ensure that communities in the east of Clayton-le-Woods parish will have clear road links with the parishes of Brindle and Hoghton via Sandy Lane and Westwood Road. In addition, we are of the view that these wards do not visibly split communities – for instance, our proposed Clayton East, Brindle & Hoghton ward does not split the Clayton Brook community. Nonetheless, given that we have developed our own warding proposals for this area, we would particularly welcome comments on these wards during this period of consultation.

Eastern Chorley



Ward name	Number of Cllrs	Variance 2024
Adlington & Anderton	3	-3%
Chorley East	3	9%
Chorley North East	3	-10%

Adlington & Anderton

40 We received submissions from Anderton Parish Council and three local residents suggesting that Heath Charnock parish should be placed in a ward with the parishes of Adlington and Anderton, stating that these communities share a number of facilities and often co-operate on local matters.

41 However, we are unable to adopt this proposal as part of our draft recommendations. While we note the proximity and community ties between the three parishes, placing Heath Charnock parish in a ward with Adlington and Anderton would result in an unacceptably high electoral variance of 22% for Adlington & Anderton ward. This variance is well beyond the electoral variances we would normally accept.

42 We have thus based our draft recommendations for Adlington & Anderton ward on the proposed boundaries put forward by the Council and the Conservative Association. This ward brings together the larger parishes of Adlington and Anderton with the smaller parish of Rivington.

Chorley East

43 Our draft recommendations for Chorley East ward are largely based on the proposals of the Council, subject to ward boundary changes in the north of the ward. Instead of following the polling district boundary across Stump Lane, and to the rear of properties on Kershaw Street, Cobden Street and Foster Street, we propose to run the ward boundary along the railway line and Corporation Street in order to create a more identifiable boundary. We considered that the Conservative Association's proposal to incorporate the whole of polling district 06B into a Chorley East ward would not provide for a cohesive ward with strong, identifiable boundaries.

44 Our proposed ward broadly follows the existing Chorley East ward, keeping together the polling districts of 05A, 05B and 05C. However, the proposed ward will also incorporate the rural areas of Heath Charnock and Anglezarke, both of which have good road access to the urban part of the ward via Cowling Road, Back Lane and Long Lane. Our Chorley East ward will have an electoral variance of 9% by 2024.

Chorley North East

45 Our draft recommendations for Chorley North East ward are based on the proposals of the Council, apart from a significant amendment to the boundary in the west of the ward. We have decided to place the existing East parish ward of Whittle-le-Woods in this ward, rather than in Chorley North, in order to create a more cohesive warding pattern in this part of the borough. Consequently, we have moved the polling district of 06C from Chorley North East ward to Chorley North ward to achieve good electoral equality. We also consider this warding pattern to better reflect road access routes in the area, where Whittle-le-Woods parish has strong links all the way up to Withnell parish via the A674 and B6229.

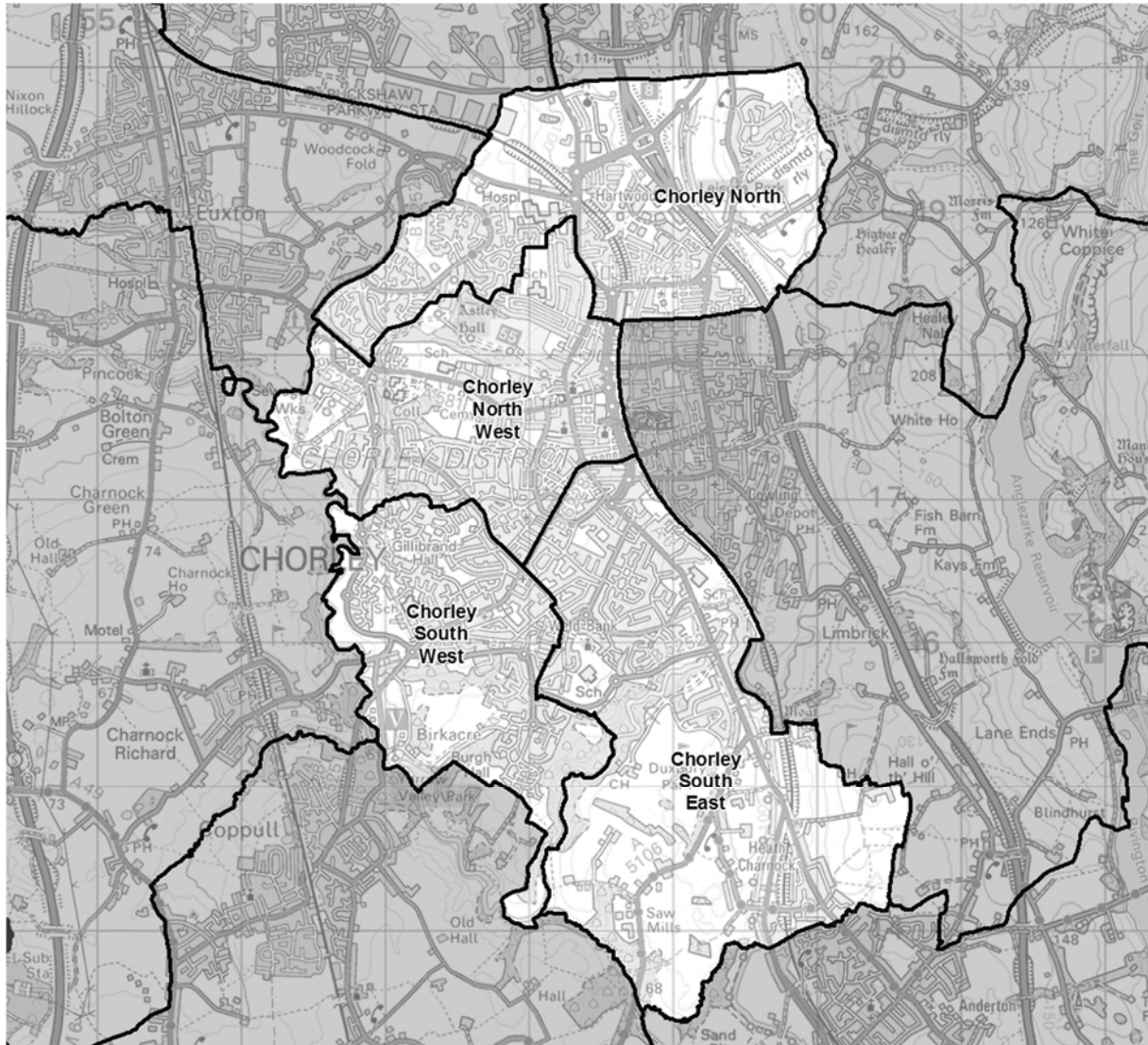
46 We were not persuaded by the Conservative Association's proposed Pennine and Chorley Rural East wards for this area, as we considered the splitting of Wheelton parish between the two wards would not reflect community identities and interests effectively.

47 Wheelton Parish Council expressed a desire for the parish to be aligned in a ward with Heapey parish. We have adopted this suggestion, as we are persuaded by the argument that the two share similar characteristics, both being rural parishes.

48 Two submissions made reference to the existing boundary between Pennine and Wheelton & Withnell wards which cuts through Wheelton village. One submission proposed an alternative boundary just south of Wheelton village. However, adopting this proposal would result in a Chorley North East ward with a poor electoral variance. We have thus decided that the boundary should follow the East parish ward of Whittle-le-Woods parish in order to achieve good electoral equality.

49 We have also adopted a local resident's request to keep Abbey village and Withnell village in the same ward. Our Chorley North East ward will have an electoral variance of -10% by 2024.

Chorley town



Ward name	Number of Cllrs	Variance 2024
Chorley North	3	-3%
Chorley North West	3	-4%
Chorley South East	3	0%
Chorley South West	3	-8%

Chorley North

50 Given our decision not to place Astley Village and Buckshaw in the same ward, we have adopted the Council's proposal to place the parish in a ward with the centre of Chorley town. This is consistent with the submissions made by Astley Village Parish Council and two local residents, who provided strong evidence that the village should look towards to the town, rather than Buckshaw village.

51 We have, however, significantly amended the remainder of the proposed Chorley North ward. In the west of the proposed ward, we have followed the Astley Village and Euxton parish boundary, in order to remove what was effectively a 'bottle neck' between north-west Euxton and south-east Euxton. We have also made this change to avoid the creation of a small parish ward for the highly populated Euxton parish. Furthermore, in the north, we have transferred Whittle-le-Woods East parish ward from the Council's proposed Chorley North ward to Chorley North East.

52 We have made these changes because we considered that the Council's proposed Chorley North ward did not follow sufficiently clear boundaries and contained relatively disparate areas with little sense of shared community identity. This was borne out when on our visit to Chorley when we looked at the proposed ward boundaries on the ground. For similar reasons, we were not persuaded by the Conservative Association's proposals for the north of Chorley town, which separated the area into three separate wards. Our Chorley North ward will have an electoral variance of -3% by 2024.

Chorley North West

53 We have broadly based our draft recommendations on the Council's proposed ward which was similar to the existing ward in this area. We agree in particular with the Council's proposal to incorporate the 09E polling district in this ward, using Tootell Street as a strong, recognisable boundary.

54 However, we made some modifications to this ward in order to create more identifiable boundaries. We have followed the railway line, rather than Market Street, in the east of the ward, as we considered it to be a better boundary between the western and eastern parts of town. We have also decided to follow Pall Mall in its entirety, as we again consider that this boundary will be more identifiable than the one proposed by the Council, which would have taken in electors that live on Duke Street, Shaw Hill Street, Silvester Road and Brindle Street and its connected roads. Our ward will have good electoral equality in 2024.

Chorley South East

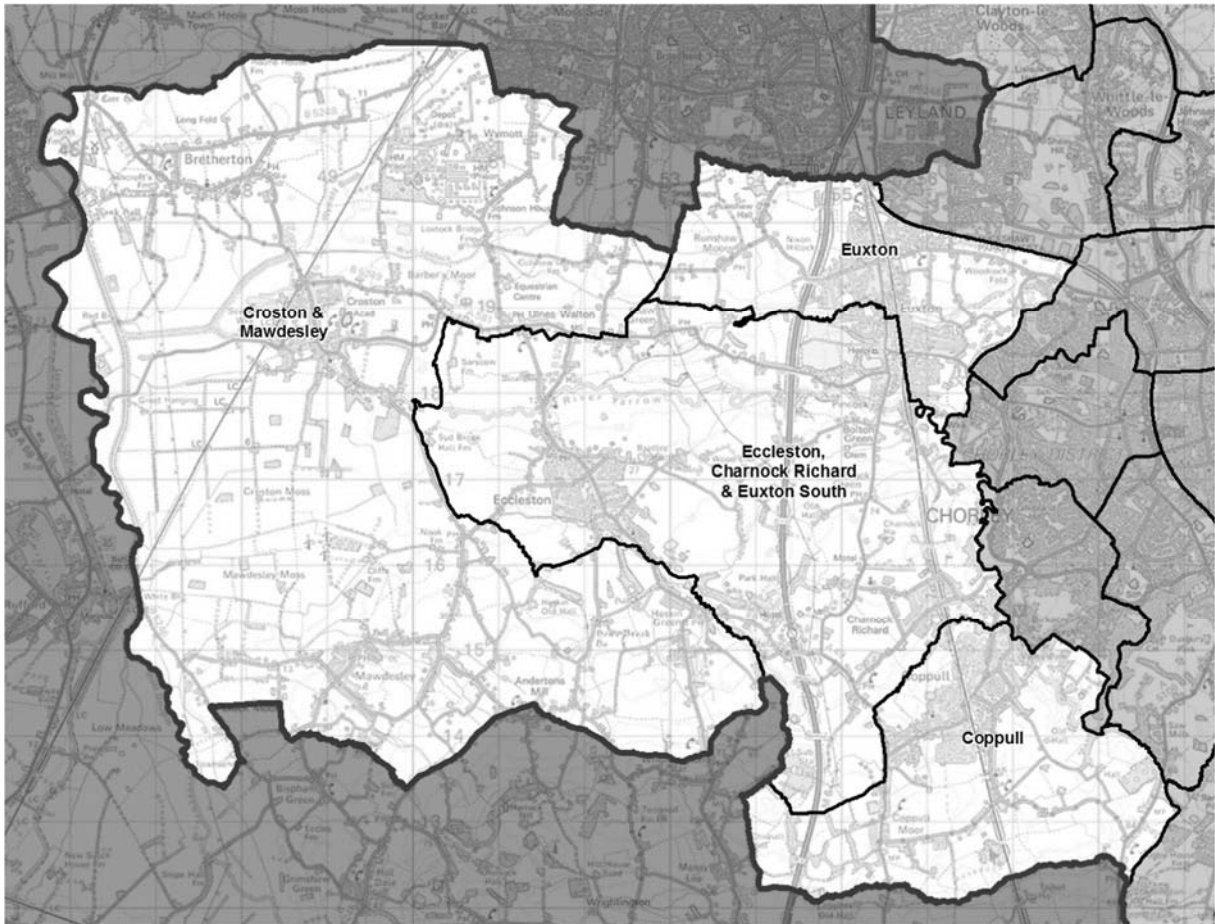
55 We have based our draft recommendations for Chorley South East ward on the Council's proposals apart from a minor change to the northern boundary where we propose that it follows Pall Mall, which we consider to be a stronger boundary. Under our draft recommendations, this ward will have good electoral equality in 2024 and will, in our view, reflect community identities.

Chorley South West

56 We have based our draft recommendations for Chorley South West ward on the Council's proposals. However, we have made minor boundary changes in the east of the ward, where we propose that it also includes electors on the western side

of Tootell Street, Weldbank Lane and Mountbatten Road and its connected roads. We consider our proposed ward will follow more identifiable boundaries and will ensure good electoral equality – especially given our changes to the west of the ward, which we have made to ensure that Charnock Richard is not split between wards. Our proposed Chorley South West ward will have an electoral variance of -8% by 2024.

Western Chorley



Ward name	Number of Cllrs	Variance 2024
Coppull	3	2%
Croston & Mawdesley	3	-8%
Eccleston, Charnock Richard & Euxton South	3	2%
Euxton	3	-4%

Coppull

57 We have based our draft recommendations for Coppull ward on the proposals from the Council and the Conservative Association, which place the parish in one ward. This proposal was supported by three local residents. Our proposed Coppull ward will have good electoral equality in 2024 and reflects community identities, based on the evidence received.

Croston & Mawdesley and Eccleston, Charnock Richard & Euxton South

58 We received two warding proposals for the rural western parishes from the Council and the Conservative Association. The Council placed the parish of Eccleston in a ward with Heskin parish and a majority of Charnock Richard parish. It proposed that the south of Euxton parish be placed in a ward with the parishes of Bretherton, Croston, Mawdesley and Ulnes Walton. Alternatively, the Conservative Association placed Heskin in a ward with Bretherton, Croston, Mawdesley and Ulnes Walton and placed the south of Euxton parish in a ward with the parishes of Eccleston and Charnock Richard.

59 We carefully examined the two alternative warding patterns for this area and have decided to base our recommendations on the Conservative Association's proposals. We consider that the Conservative's proposals better reflect our statutory criteria than the Council's. In particular, we consider that they better reflect local transport routes between communities and, overall, provide for more clearly identifiable ward boundaries. We also considered that the link between the parish of Mawdesley and south Euxton was not strong, and that the proposed division of Charnock Richard parish between wards would split a cohesive community into two.

60 However, we do note the submissions made by Eccleston Parish Council and a local resident who both suggested that Heskin parish should be placed in a ward with Eccleston parish, due to their proximity and community ties. For this reason, we are particularly interested to hear local views in relation to our proposed wards during consultation.

61 Bretherton Parish Council requested that it be placed in a ward with Croston parish and Ulnes Walton parish due to the rural nature of these communities. We agree that placing these parishes together will effectively reflect community identities and have adopted this proposal as part of our draft recommendations.

62 We are also recommending different ward names to those proposed by the Council and Conservative Association. We have decided that the proposed Lostock & Mawdesley ward, as proposed by the Council, be named Croston & Mawdesley as we consider the village of Croston to be a more defining feature of the ward than the River Lostock, given approximately 40% of the ward's electorate live in Croston parish. We have also adopted the name Eccleston, Charnock Richard & Euxton South for the other western rural ward. We consider our proposed ward name is more descriptive of the communities which comprise it than the Conservative Association's proposed name of Chorley West.

Euxton

63 The Council and the Conservative Association proposed a broadly similar warding arrangement for Euxton. Both proposed a ward which contained the existing

Euxton North ward and the eastern part of the current Euxton South ward, thus placing the south-western part of the parish into rural wards to the west to provide for electoral equality.

64 Both Euxton Parish Council and two local residents stated a preference for Euxton parish remaining wholly in one borough ward but recognised that the parish had an electorate that was both too large for a single ward and too small to divide into two wards. Consequently, the three submissions generally accepted the likelihood of the parish being split as part of draft recommendations to satisfy our statutory criteria. Two of the submissions did, however, request that any ward which had parts of Euxton parish within it should consequently include the Euxton name, given the parish has a strong community identity.

65 We have decided to adopt the Conservative Association's proposal for Euxton parish. We consider that this proposal, which joins southern Euxton with Eccleston and Charnock Richard, will form a more cohesive ward than the Council's proposal, which divided the south-west of Euxton into two wards rather than one. We have also amended the eastern boundary of our Euxton ward to follow the parish boundary, as discussed in paragraph 51.

66 As stated in paragraph 62, we have decided that the borough ward that contains south Euxton should be named Eccleston, Charnock Richard & Euxton South. This is to represent the Euxton community that will now be placed within this ward. However, we did not consider that the ward which contains the Buckshaw village part of the parish should contain the Euxton name as we consider Buckshaw village to have a distinct identity which is separate from the rest of Euxton parish.

67 The two borough-wide schemes differed in relation to electors that reside on Firbank, Brookside and Park Avenue. We have placed electors on these roads in our proposed Eccleston, Charnock Richard & Euxton South ward to best reflect the local road layout and access routes.

Conclusions

68 The table below shows the impact of our draft recommendations on electoral equality, based on 2018 and 2024 electorate figures.

Summary of electoral arrangements

	Draft recommendations	
	2018	2024
Number of councillors	42	42
Number of electoral wards	14	14
Average number of electors per councillor	2,038	2,146
Number of wards with a variance more than 10% from the average	1	0
Number of wards with a variance more than 20% from the average	0	0

Mapping

Sheet 1, Map 1 shows the proposed wards for Chorley.

You can also view our draft recommendations for Chorley Borough Council on our interactive maps at <http://consultation.lgbce.org.uk>

Draft recommendation

Chorley Borough Council should be made up of 42 councillors serving 14 three-councillor wards. The details and names are shown in Appendix A and illustrated on the large maps accompanying this report.

Parish electoral arrangements

69 As part of an electoral review, we are required to have regard to the statutory criteria set out in Schedule 2 to the Local Democracy, Economic Development and Construction Act 2009 (the 2009 Act). The Schedule provides that if a parish is to be divided between different wards it must also be divided into parish wards, so that each parish ward lies wholly within a single ward. We cannot recommend changes to the external boundaries of parishes as part of an electoral review.

70 Under the 2009 Act we only have the power to make changes to parish electoral arrangements where these are as a direct consequence of our recommendations for principal authority warding arrangements. However, Chorley Borough Council has powers under the Local Government and Public Involvement in Health Act 2007 to conduct community governance reviews to effect changes to parish electoral arrangements.

71 As a result of our proposed ward boundaries and having regard to the statutory criteria set out in schedule 2 to the 2009 Act, we are providing revised parish electoral arrangements for Clayton-le-Woods Parish Council, Euxton Parish Council and Heath Charnock Parish Council.

72 We are providing revised parish electoral arrangements for Clayton-le-Woods parish.

Draft recommendation	
Clayton-le-Woods Parish Council should comprise 15 councillors, as at present, representing four wards:	
Parish ward	Number of parish councillors
Clayton Brook	5
Clayton Green	1
South East	2
West	7

73 We are providing revised parish electoral arrangements for Euxton parish.

Draft recommendation	
Euxton Parish Council should comprise 18 councillors, as at present, representing three wards:	
Parish ward	Number of parish councillors
Buckshaw Village	5
North & East	11
South	2

74 We are providing revised parish electoral arrangements for Heath Charnock parish.

Draft recommendation	
Heath Charnock Parish Council should comprise seven councillors, as at present, representing two wards:	
Parish ward	Number of parish councillors
East	2
West	5

3 Have your say

75 The Commission has an open mind about its draft recommendations. Every representation we receive will be considered, regardless of who it is from or whether it relates to the whole borough or just a part of it.

76 If you agree with our recommendations, please let us know. If you don't think our recommendations are right for Chorley, we want to hear alternative proposals for a different pattern of wards.

77 Our website has a special consultation area where you can explore the maps and draw your own proposed boundaries. You can find it at www.consultation.lgbce.org.uk

78 Submissions can also be made by emailing reviews@lgbce.org.uk or by writing to:

Review Officer (Chorley)
The Local Government Boundary Commission for England
1st Floor, Windsor House
50 Victoria Street
London
SW1H 0TL

79 The Commission aims to propose a pattern of wards for the Chorley which delivers:

- Electoral equality: each local councillor represents a similar number of voters
- Community identity: reflects the identity and interests of local communities
- Effective and convenient local government: helping your council discharge its responsibilities effectively

80 A good pattern of wards should:

- Provide good electoral equality, with each councillor representing, as closely as possible, the same number of voters
- Reflect community interests and identities and include evidence of community links
- Be based on strong, easily identifiable boundaries
- Help the council deliver effective and convenient local government

81 Electoral equality:

- Does your proposal mean that councillors would represent roughly the same number of voters as elsewhere in the council area?

82 Community identity:

- Community groups: is there a parish council, residents' association or other group that represents the area?
- Interests: what issues bind the community together or separate it from other parts of your area?
- Identifiable boundaries: are there natural or constructed features which make strong boundaries for your proposals?

83 Effective local government:

- Are any of the proposed wards too large or small to be represented effectively?
- Are the proposed names of the wards appropriate?
- Are there good links across your proposed wards? Is there any form of public transport?

84 Please note that the consultation stages of an electoral review are public consultations. In the interests of openness and transparency, we make available for public inspection full copies of all representations the Commission takes into account as part of a review. Accordingly, copies of all representations will be placed on deposit at our offices in Victoria Street (London) and on our website at www.lgbce.org.uk A list of respondents will be available from us on request after the end of the consultation period.

85 If you are a member of the public and not writing on behalf of a council or organisation we will remove any personal identifiers, such as postal or email addresses, signatures or phone numbers from your submission before it is made public. We will remove signatures from all letters, no matter who they are from.

86 In the light of representations received, we will review our draft recommendations and consider whether they should be altered. As indicated earlier, it is therefore important that all interested parties let us have their views and evidence, **whether or not** they agree with the draft recommendations. We will then publish our final recommendations.

87 After the publication of our final recommendations, the changes we have proposed must be approved by Parliament. An Order – the legal document which brings into force our recommendations – will be laid in draft in Parliament. The draft Order will provide for new electoral arrangements to be implemented at the all-out elections for Chorley in 2020.

Equalities

88 The Commission has looked at how it carries out reviews under the guidelines set out in Section 149 of the Equality Act 2010. It has made best endeavours to ensure that people with protected characteristics can participate in the review process and is sufficiently satisfied that no adverse equality impacts will arise as a result of the outcome of the review.

Appendix A

Draft recommendations for Chorley Borough Council

	Ward name	Number of councillors	Electorate (2018)	Number of electors per councillor	Variance from average %	Electorate (2024)	Number of electors per councillor	Variance from average %
1	Adlington & Anderton	3	6,031	2,010	-1%	6,251	2,084	-3%
2	Buckshaw & Whittle	3	6,248	2,083	2%	7,058	2,353	10%
3	Chorley East	3	6,676	2,225	9%	7,009	2,336	9%
4	Chorley North	3	6,109	2,036	0%	6,268	2,089	-3%
5	Chorley North East	3	5,507	1,836	-10%	5,772	1,924	-10%
6	Chorley North West	3	5,751	1,917	-6%	6,163	2,071	-4%
7	Chorley South East	3	6,283	2,094	3%	6,461	2,154	0%
8	Chorley South West	3	5,744	1,915	-6%	5,916	1,972	-8%
9	Clayton East, Brindle & Hoghton	3	6,913	2,304	13%	7,088	2,363	10%
10	Clayton West & Cuerden	3	6,250	2,083	2%	6,865	2,288	7%
11	Coppull	3	6,185	2,062	1%	6,572	2,191	2%

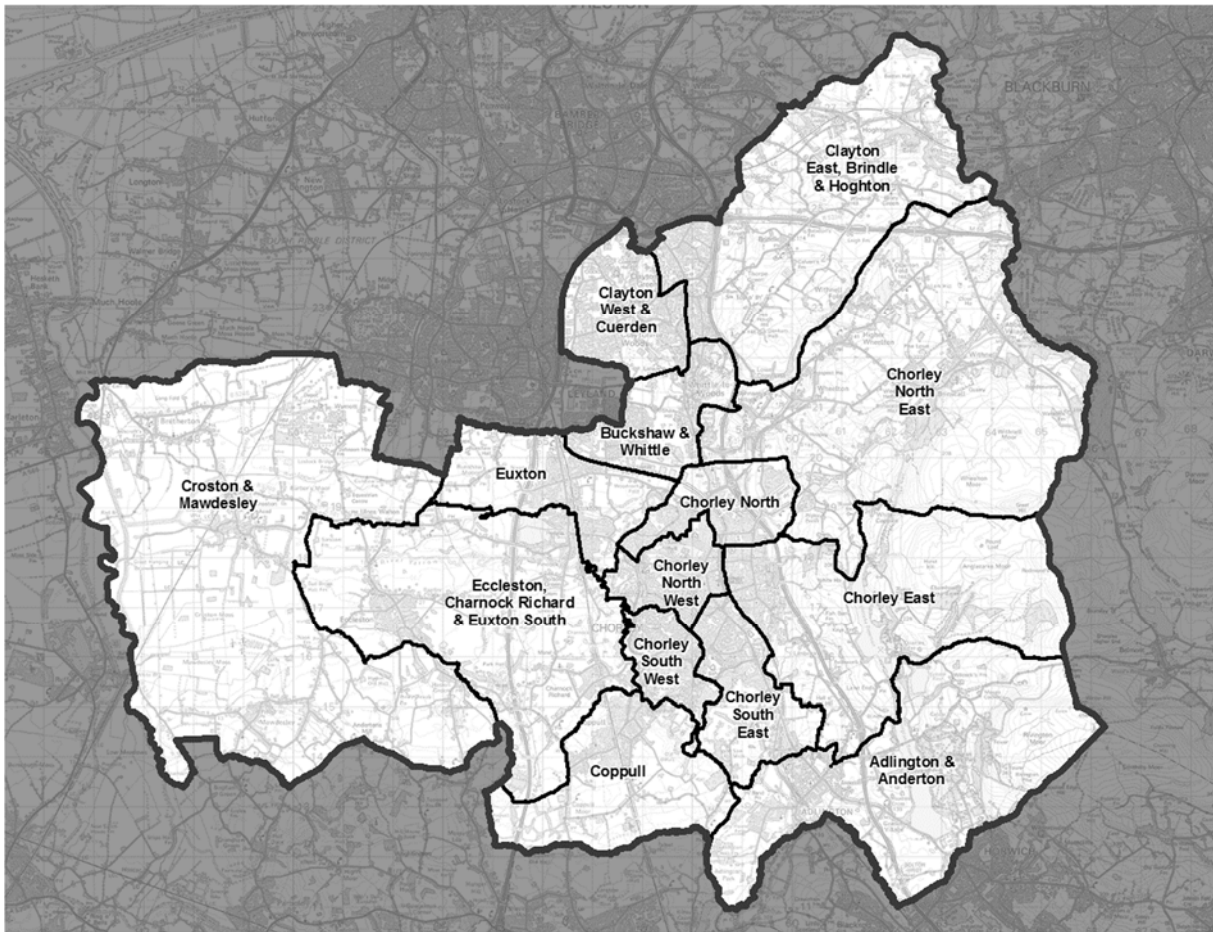
Ward name	Number of councillors	Electorate (2018)	Number of electors per councillor	Variance from average %	Electorate (2024)	Number of electors per councillor	Variance from average %
12 Croston & Mawdesley	3	5,694	1,898	-7%	5,956	1,985	-8%
13 Eccleston, Charnock Richard & Euxton South	3	6,370	2,123	4%	6,550	2,183	2%
14 Euxton	3	5,814	1,938	-5%	6,169	2,056	-4%
Totals	42	85,575	-	-	90,148	-	-
Averages	-	-	2,038	-	-	2,146	-

Source: Electorate figures are based on information provided by Chorley Borough Council.

Note: The 'variance from average' column shows by how far, in percentage terms, the number of electors per councillor in each electoral ward varies from the average for the borough. The minus symbol (-) denotes a lower than average number of electors. Figures have been rounded to the nearest whole number.

Appendix B

Outline map



A more detailed version of this map can be seen on the large map accompanying this report, or on our website: www.lgbce.org.uk/all-reviews/north-west/lancashire/chorley

Appendix C

Submissions received

All submissions received can also be viewed on our website at:

www.lgbce.org.uk/all-reviews/north-west/lancashire/chorley

Local Authority

- Chorley Borough Council

Political Group

- Chorley Conservative Association

Parish and Town Councils

- Anderton Parish Council
- Astley Village Parish Council
- Bretherton Parish Council
- Eccleston Parish Council
- Euxton Parish Council
- Wheelton Parish Council

Local Residents

- 37 local residents

Appendix D

Glossary and abbreviations

Council size	The number of councillors elected to serve on a council
Electoral Change Order (or Order)	A legal document which implements changes to the electoral arrangements of a local authority
Division	A specific area of a county, defined for electoral, administrative and representational purposes. Eligible electors can vote in whichever division they are registered for the candidate or candidates they wish to represent them on the county council
Electoral fairness	When one elector's vote is worth the same as another's
Electoral inequality	Where there is a difference between the number of electors represented by a councillor and the average for the local authority
Electorate	People in the authority who are registered to vote in elections. For the purposes of this report, we refer specifically to the electorate for local government elections
Number of electors per councillor	The total number of electors in a local authority divided by the number of councillors
Over-represented	Where there are fewer electors per councillor in a ward or division than the average

Parish	A specific and defined area of land within a single local authority enclosed within a parish boundary. There are over 10,000 parishes in England, which provide the first tier of representation to their local residents
Parish council	A body elected by electors in the parish which serves and represents the area defined by the parish boundaries. See also 'Town council'
Parish (or Town) council electoral arrangements	The total number of councillors on any one parish or town council; the number, names and boundaries of parish wards; and the number of councillors for each ward
Parish ward	A particular area of a parish, defined for electoral, administrative and representational purposes. Eligible electors vote in whichever parish ward they live for candidate or candidates they wish to represent them on the parish council
Town council	A parish council which has been given ceremonial 'town' status. More information on achieving such status can be found at www.nalc.gov.uk
Under-represented	Where there are more electors per councillor in a ward or division than the average
Variance (or electoral variance)	How far the number of electors per councillor in a ward or division varies in percentage terms from the average

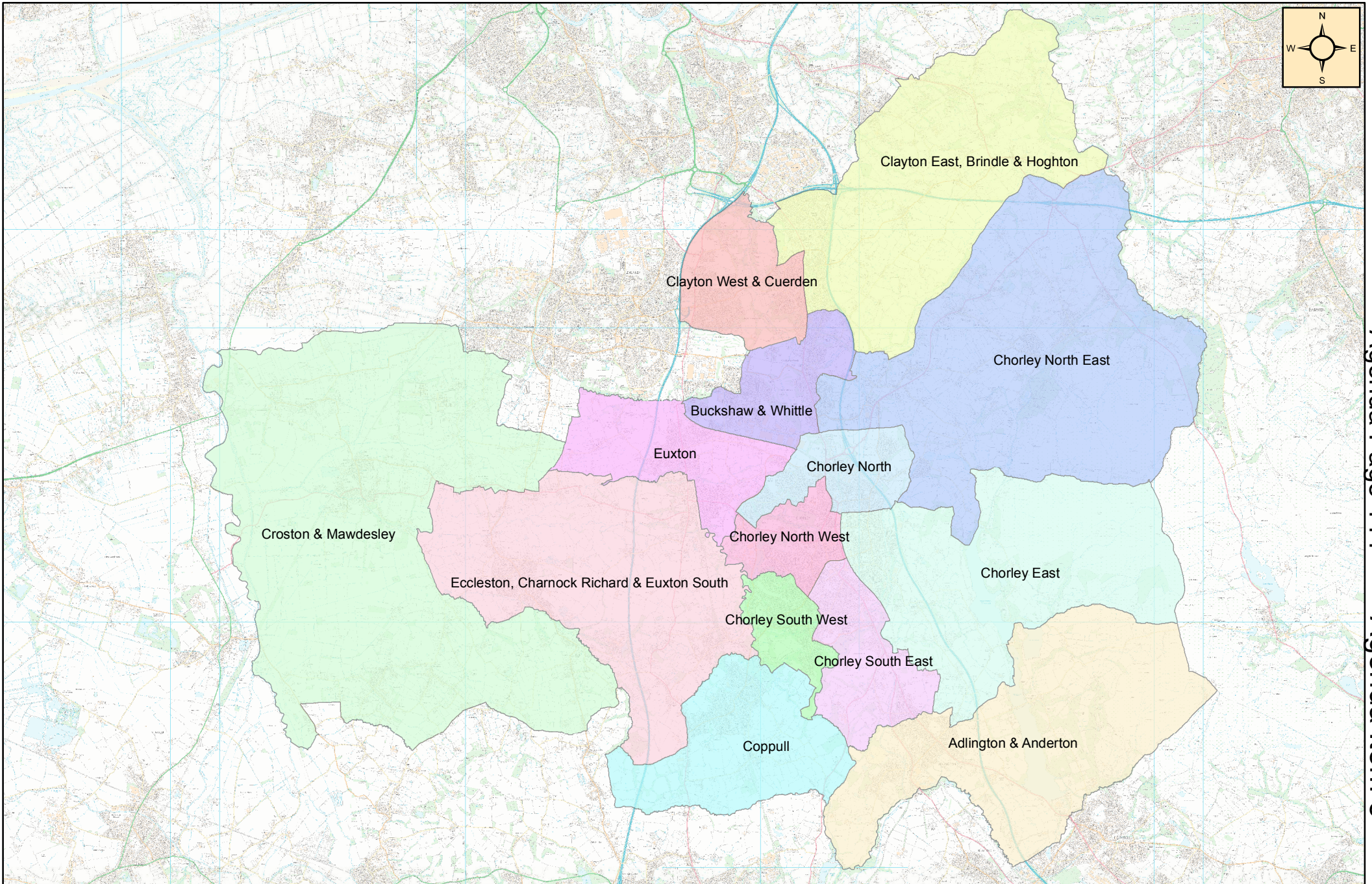
Ward	A specific area of a district or borough, defined for electoral, administrative and representational purposes. Eligible electors can vote in whichever ward they are registered for the candidate or candidates they wish to represent them on the district or borough council
------	--

The
Local Government
Boundary Commission
for England

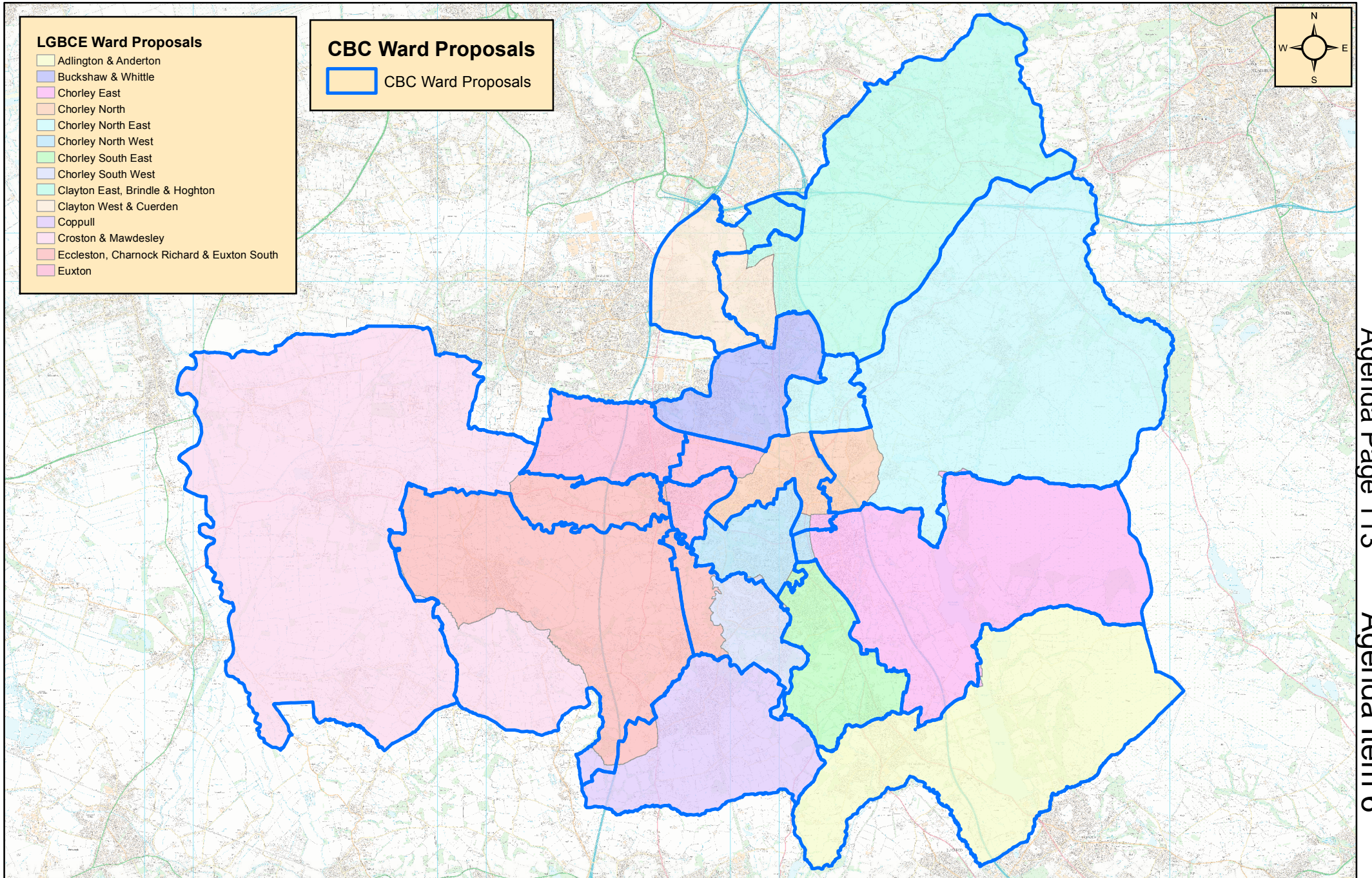
The Local Government Boundary Commission for England (LGBCE) was set up by Parliament, independent of Government and political parties. It is directly accountable to Parliament through a committee chaired by the Speaker of the House of Commons. It is responsible for conducting boundary, electoral and structural reviews of local government.

Local Government Boundary Commission for
England
1st Floor, Windsor House
50 Victoria Street, London
SW1H 0TL

Telephone: 0330 500 1525
Email: reviews@lgbce.org.uk
Online: www.lgbce.org.uk or
www.consultation.lgbce.org.uk
Twitter: @LGBCE



This page is intentionally left blank



This page is intentionally left blank

Notice of Motion submitted by Councillor Alan Whittaker

Chorley Council notes the commitment undertaken by Chorley Community Housing (CCH) at the time of housing stock transfer from the council, to deliver 1,000 off street parking spaces which it has done. However, it also notes that CCH has accrued significant funds in excess of those anticipated from its Chorley housing stock that it has subsequently utilised in its recent growth initially as part of Adactus Housing Group and latterly as part of the Jigsaw Housing Group. Therefore the council requests that the Council Leader write formally to CCH/Jigsaw to request that they undertake to supply a further number of off street parking spaces in areas where the legacy issues have not been resolved as anticipated. These works are to be undertaken across Chorley borough and identified and evidenced by councillors in order to recognise the specific issues in each council ward and also the significant contribution of Chorley to the wider groups finances.

This page is intentionally left blank